

REAR HUBS & AXLE FITTINGS

Hubs (& internals):

V = QHUBR3-SA (Sturmey Archer 3-speed)

or QHUBR3-SR (SRAM 3-speed)

or (not shown) QHUBINT5-SA (SA 5-speed internals)

W = QHUBR2

Fastener sets:

A + B + C + D = QRW3NB-SR (SRAM 3-speed)

R + S + T = QRW2NB

YA+YB+YC+YD = QRW3NB-SA (SA 3-speed)

YA+YB+YG+YH+YJ = QRW5NB (SA 5-speed)

Parts external to chain tensioner:

C + D = QCTN3-SR (SRAM)

YC + YD = QCTN3-SA (SA, alloy shell)

YC + YD = QCTN3-SA-01 (SA, pre-2004)

YJ = QGRA

CHAIN TENSIONER PARTS

For single rear sprocket:

F to P = QCTA (complete chain tensioner)

(J + K + L) x 2 = QCTIDL (pair)

M = QCTD

N = QCTARM

P = QCTB

For derailleur:

DF to DP = QCTADR (complete chain tensioner)

(DF to DL) x 2 = QCTIDLRSET (pair)

DJ + DK = QCTIDLDR

DL = QCTIDLSPINDR

DF+ DG + DH = QCTIDLNBDR

DN = QCTARMDR

DP = QCTBDR

REAR SPROCKETS

Sprockets:

N.B. check the *thickness* of 13-tooth non-derailleur sprockets before ordering

L (13T x 3mm) = QRSR13

L (14T) = QRSR14

L (13T x 2.6mm) = QRSR13-01

C (12T) = QRSR12DR

C (13T) = QRSR13DR

F (15T) = QRSR15DR

F (16T) = QRSR16DR

Chain Guide Discs & Clip:

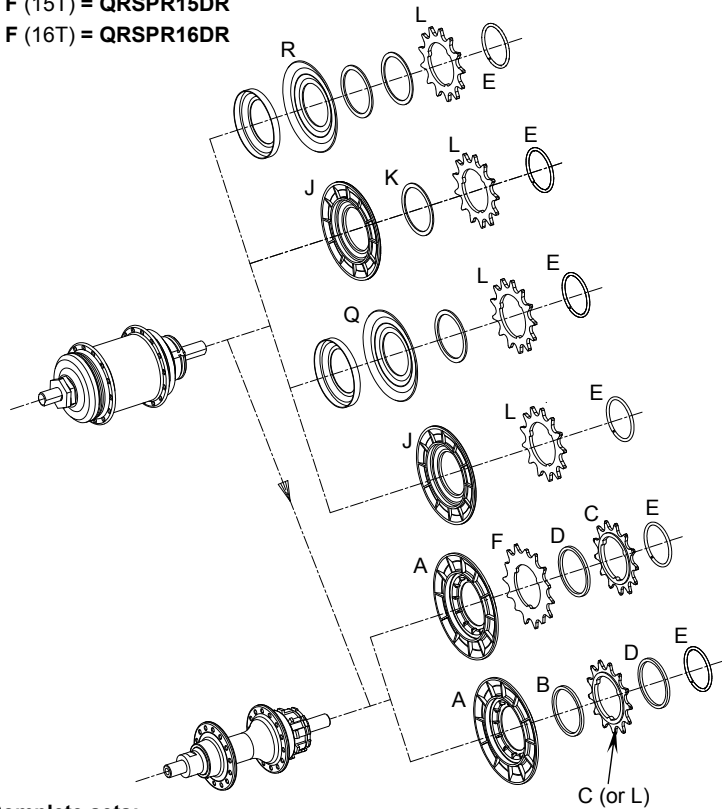
A = QCHGD-BB/SR

J = QCHGD-SA

Q = QCHGD-SA5-01 (0.7mm thick)

R = QCHGD-SA-01 (0.9mm thick)

E = QRSRCLIP



Complete sets:

A to E = QRSRSTACK-BB1 (1-speed)

A + B + L + D + E = QRSRSTACK-SR3-13 (SRAM 3-speed, 13T sprocket)

A + B + L + D + E = QRSRSTACK-SR3-14 (SRAM 3-speed, 14T sprocket)

A + C to F = QRSRSTACK-BB2 (for 2-speed)

A + C to F = QRSRSTACK-SR6 (for 6-speed)

J to L + E = QRSRSTACK-SA-13 (Sturmey Archer, 13T sprocket)

J to L + E = QRSRSTACK-SA-14 (Sturmey Archer, 14T sprocket)

N.B. Set suitable for any Sturmey Archer hub. When fitting to a SA 3-speed with an alloy shell, or to a SA 5-speed (5* or Sprinter), the spacer K is omitted.

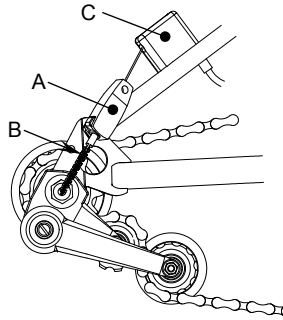
HUB GEAR CABLE ENDS

For SRAM hub gears:

A = QGCABANC-SR

B = QGICH3-SR

C=QCPULA



For STURMEY ARCHER hub gears:

E = QGCABANC-SA

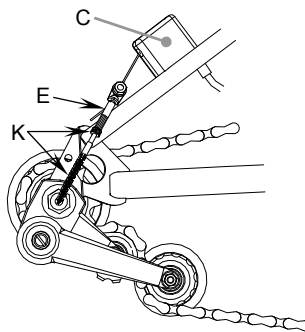
K = QGICH3-SA (3-speed, post-2004)

K = QGICH3-SA-01 (3-speed, pre-2004)

K = QGICH5B (with blue mark, for Sprinter 5-speed hubs with "ball-locking", date mark on shell 3/00 onwards)

K = QGICH5R (with red mark, for Sprinter 5-speed hubs without "ball-locking", date mark on shell before 3/00)

C = QCPULA



REAR RACK

For replacement of a damaged rear rack on Mark 3 bikes:

A + B + C + E = QRCC

For replacement of a damaged rear rack on Mark 2 bikes:

A + B + C + D + E + mudguard = QRCCO

For fitting a rear rack to E or L Versions:

A to R + mudguard + reflector (not shown) = QRCA

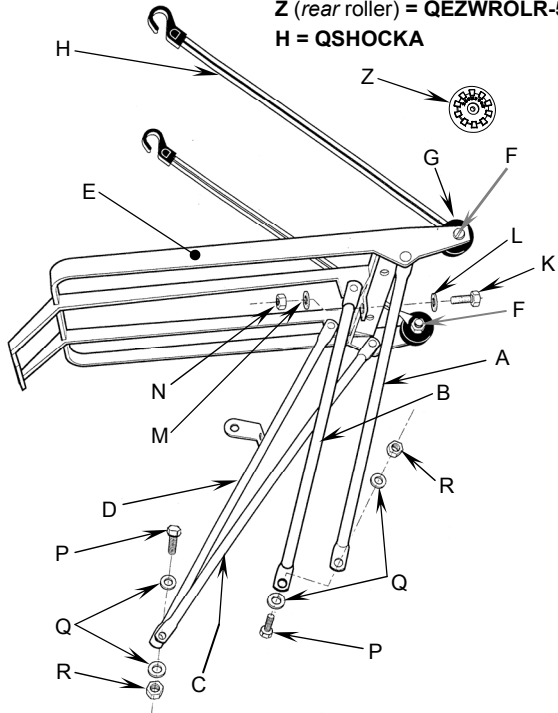
D = QVRCSTDYN

F = QROLRBOLTS

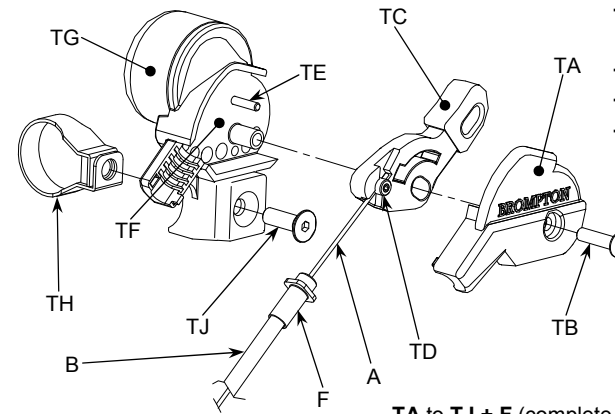
G = QROLRA

Z (rear roller) = QEZWROLR-5

H = QSHOCKA



DERAILLEUR CONTROL AND CABLES AND ACTUATOR

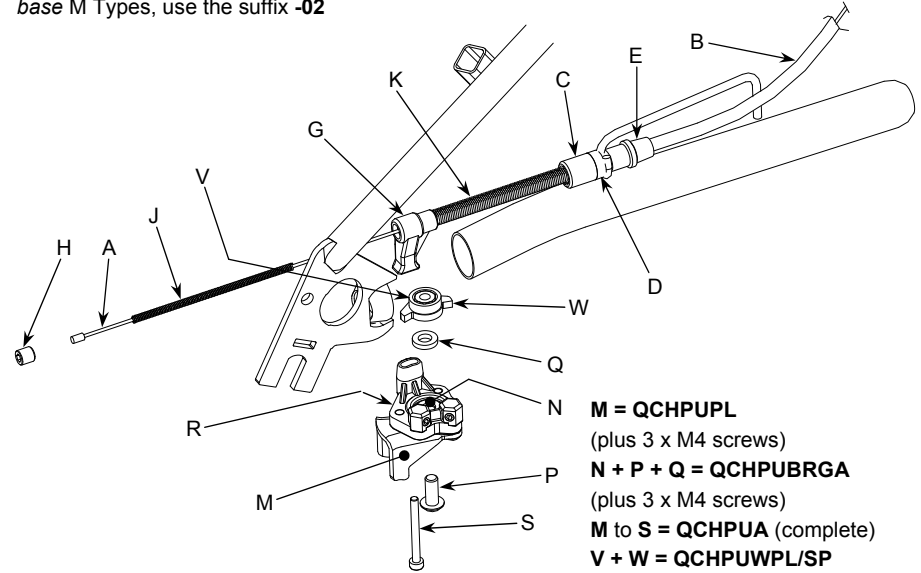


TE + TF + TG (inc. bell-striker) = QGTRIGHODRA
 TA + TB = QGTRIGCAPDR
 TC = QGTRIGLEVDR
 TD = QGCABTHNIPA

TA to TJ + F (complete trigger assembly) = QGTRIGDRA

- A + B = QGCABDR-# (normal replacement cable)
- A to K = QGCABSETDR-# (complete cable set)
- A + B + G to J = QDRRETCAB-# (cable set needed with retro-upgrade kit, to suit model)
- G + H = QCHPULEGA (with inner spring tube)
- J + K = QGCABSPRSETDR (springs)
- C + D + E + F = QGCABSTSETDR (cable stops)

Note: replace "#*" with the suffix -M -P or -S, according to bike type; for earlier, short-wheel-base M Types, use the suffix -02



M = QCHPUPL
 (plus 3 x M4 screws)
 N + P + Q = QCHPUBRGA
 (plus 3 x M4 screws)
 M to S = QCHPUA (complete)
 V + W = QCHPUWPL/SP

DYNAMO LIGHTING

Complete sets:

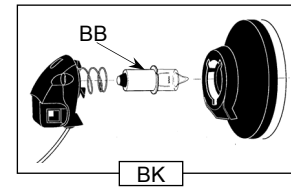
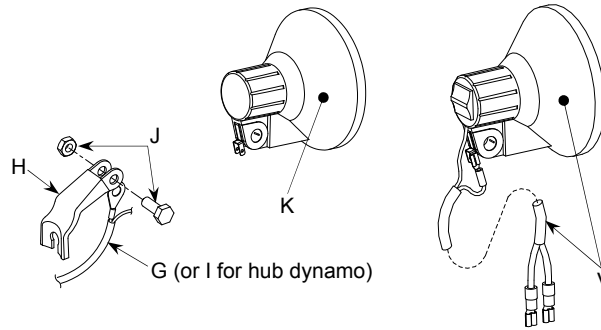
The rear lamp includes a capacitor and stays on when the bike stops. For complete sets, the front halogen lamp includes a reflector.

F to K + P to S + T + U + cable-ties = QVDYNOSET-E

G to S + cable-ties = QVDYNOSET-L

A to K + cable-ties = QVDYNOSET-R

H to J + P to R + V to X + cable-ties = QVHUBDYNSSET



Sundries:

G + S + tie-wraps = QVDWLOOM-NR

G + C + tie-wraps = QVDWLOOM-R

I + tie-wraps = QVDWLOOMHDYN

BB = QVBULBFH

BB (non-halogen, not shown) = QVBULBFI

ZB = QVBULBR

Front lamps & bracket:

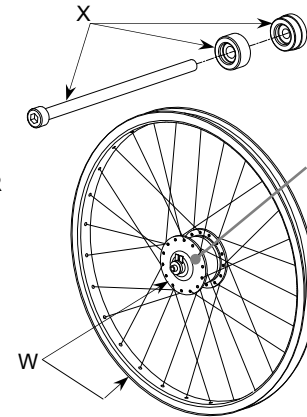
BK (compact) = QVDYNFLAMH

K (with reflector) = QVDYNFLAMHR

V (switched) = QVDYNFLAMH-SW

K (non-halogen) = QVDYNFLAMI

H + J = QVBKTFLAMDYN



Dynamos and fixings:

N = QVDYNO-LH

F = QVDYNO-RH

W = QFWHUBDYNS

Y = QHUBFDYN

T + U = QVBKTDYN-E

L = QVMGSRDYN

D = QVRCSTDYN

BD = QVRCSTDYN-SL

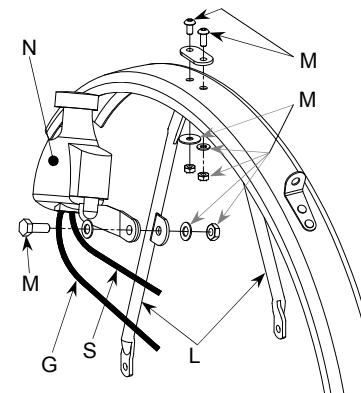
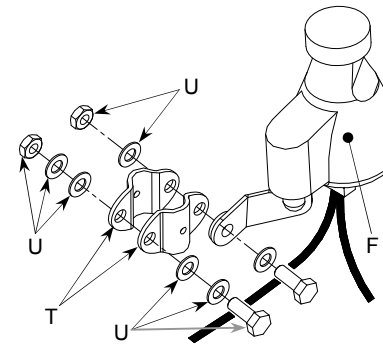
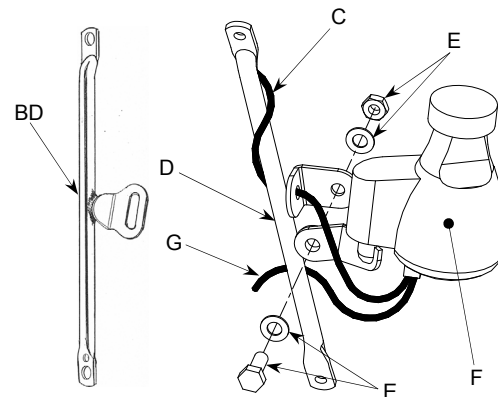
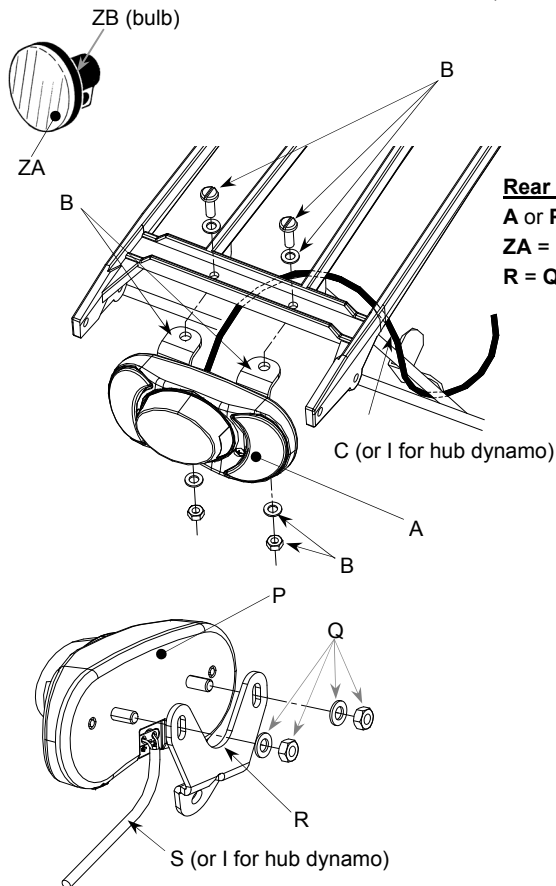
X = QFWHUBDYN-NB

Rear lamps:

A or P = QVDYNRLAMCAP

ZA = QVDYNRLAMO

R = QVBKTRLAM-NR



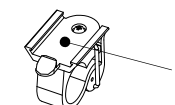
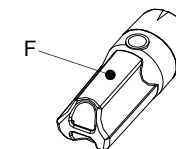
BATTERY LIGHTING

Batteries included.

Items A – D only required on the M Type; items H are not required: they are shown to identify where items K are used; item J is only required on bikes without a rear rack

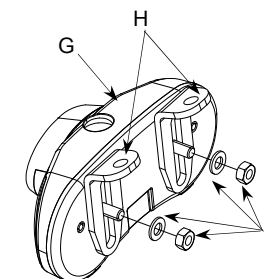
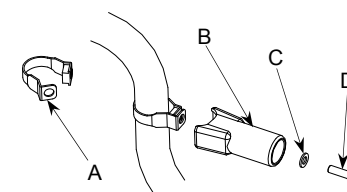
Complete set, for any model:

A to G + J to K = QVBATLAMSET



E + F = QVBATFLAM

A to D = QVBKTLAMBAT

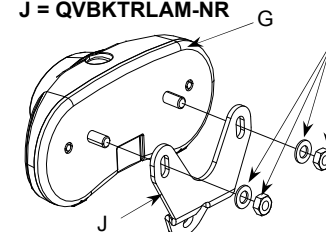


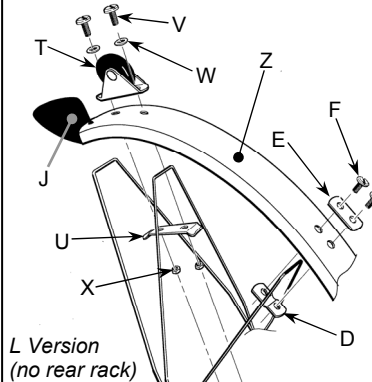
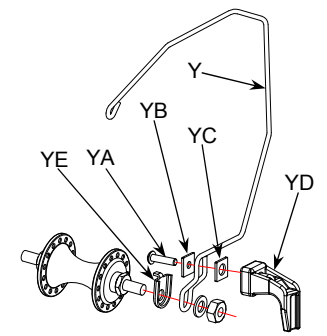
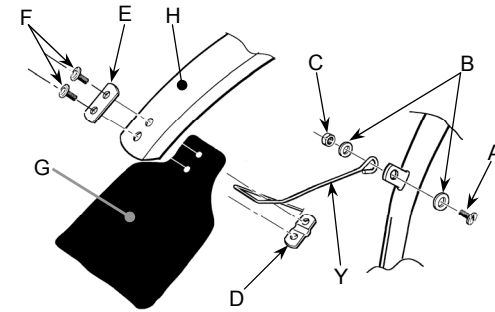
G = QVBATRLAM

G + K = QVBATRLAMA-R

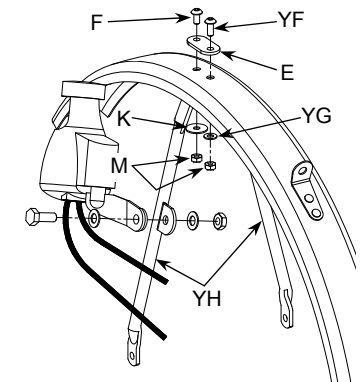
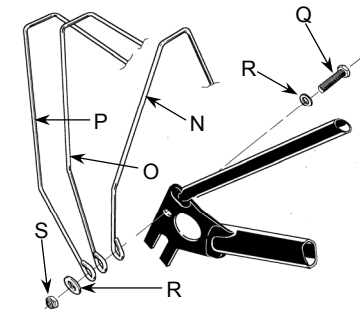
G + J + K = QVBATRLAMA-NR

J = QVBKTRLAM-NR





L Version
(no rear rack)

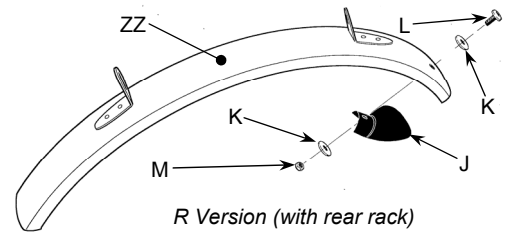


MUDGUARDS & STAYS

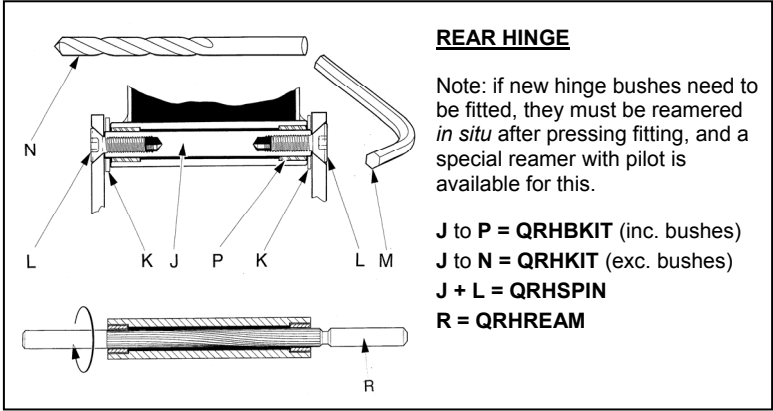
- A to Z + YA to YE = QMGSETL**
(complete mudguard set for an E Version using steel stays)
- A to Z + YA to YE = QMGSETL-TI** (ditto, titanium stays)
- A to M + YF to YH + O to Z = QMGSETL-DYN**
(for an E Version with dynamo, using steel stays)
- A to M + YF to YH + O to Z = QMGSETL-TI-DYN**
(ditto, titanium stays – item YH steel)
- H + D to G = QMGF**
- G = QMGFLAPF**
- Z + J to M = QMGRLA**
- ZZ + J to M = QMGRRDA** (with cut-out for dynamo)
- ZZ + J to M = QMGRRRA** (without cut-out for dynamo)
- J to M = QMGFLAPR**
- T to X = QMGROLA**

Stays, etc.

- Y + A to F + YA to YE = QMGSAFA** (steel stay)
- Y + A to F + YA to YE = QMGSAFA-TI** (titanium stay)
- YA to YD + wire-form** (not shown) = **QHOOKWFA-E**
(for E Version, without mudguards)
- YA to YD = QHOOKA**
- Y + A to F = QMGSF5A** (for 5-spd with integral wire hook)
- PVC sleeve for above item (not shown) = **QMGSFSLV-01**
- N to S = QMGSRSET** (steel stays)
- N to S = QMGSRSET-TI** (titanium stays)
- YH = QVMGSRDYN**
- YF + YG + E + F + K + M = QMGRLD-STAP-KIT**
- D to F = QMGSTAP**



R Version (with rear rack)



ROLLERS

U = QROLM

V = QROLMBOLTS

(screw, washer & spacer)

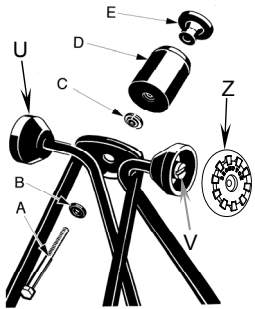
Z (forward roller) =

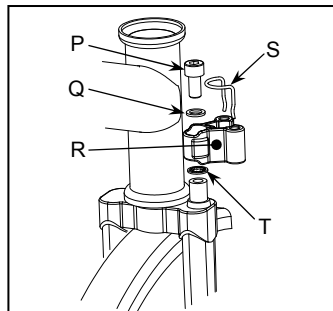
QEZWROLF-6

SUSPENSION BLOCK

A to E = QSUSPBA

C (set of 6) = QSUSPBBUSH

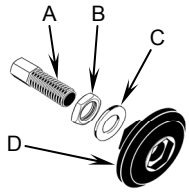




HANDLEBAR CATCH

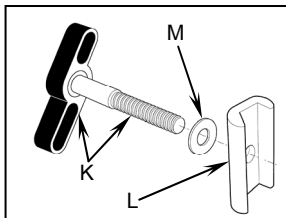
**P to T + nipple (not shown) =
QHBCA**

S (set of 10) = QHBCSPRING10



LOWER STOP DISC

A + B + C + D = QLSDA



HINGE CLAMP

K + L + M = QHCA

K = QHCLEVA

L = QHCPL

